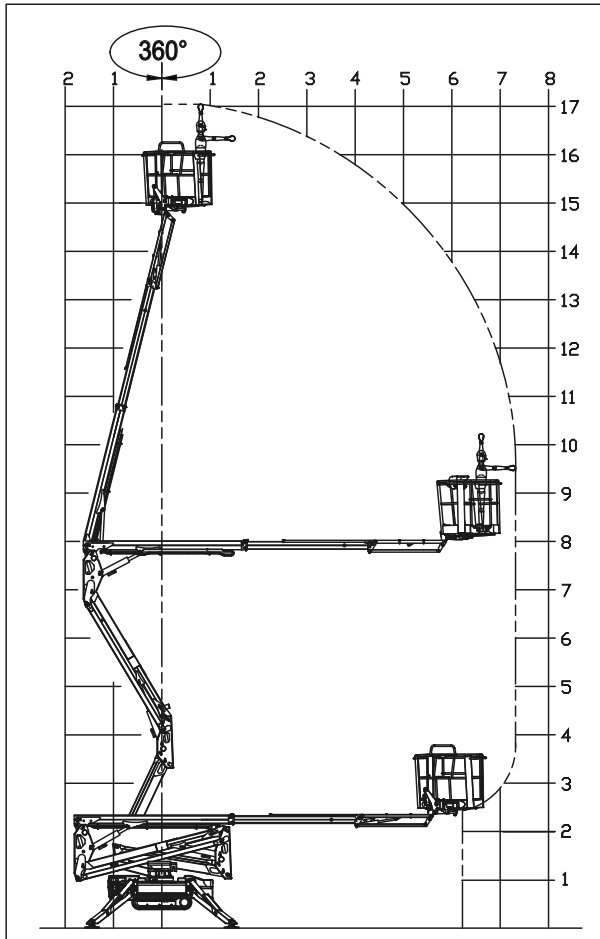
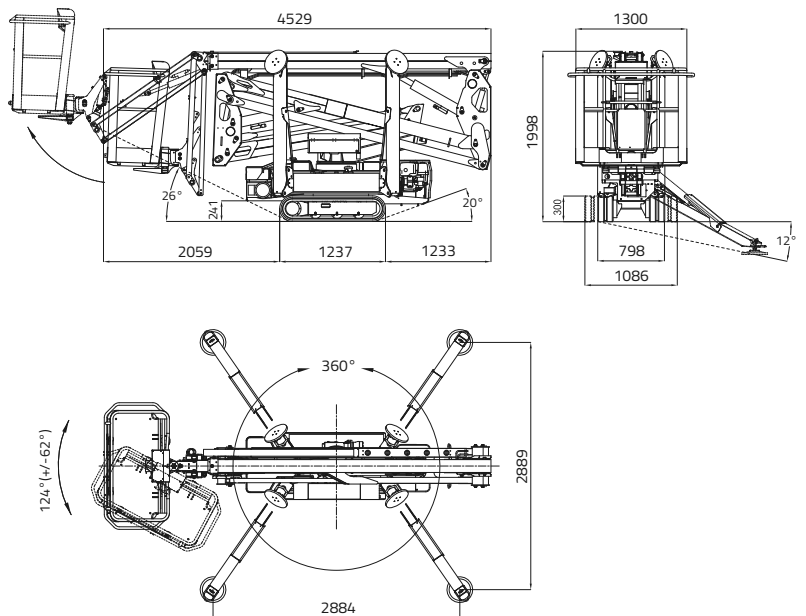


LL17.75 MK2



CAPACITY 230 KG

(2 persons 80x2=160 kg + tool box 70 kg)



17,06 m



7,50 m



4,53 m



4,17 m



1,99 m



1.335 x 690 x h. 1.100 mm



124° (+/-62°)



16° / 28,7%



798 - 1086 mm



1.731 daN - 2,45 daN/cm²



2.884 x 2.889 mm



Automatic set up system IIIS std.



Remote control



GPRS-GPS

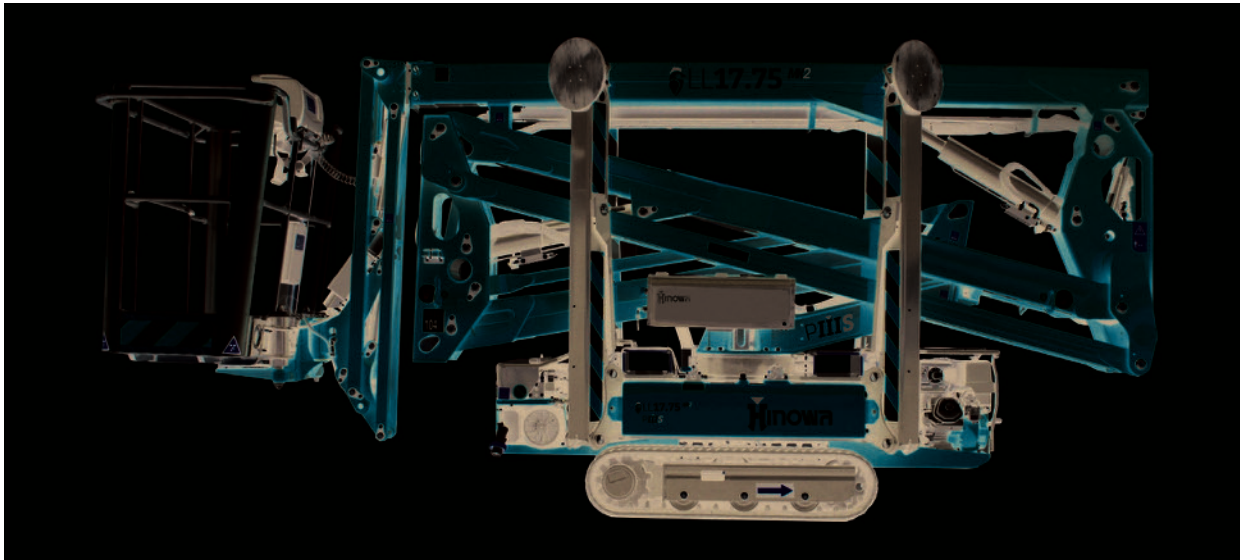


R.A.H.M.



Lithium-ion battery pack
4,8 kWh
Optional

 LL17.75 *MK2*



PETROL ENGINE

Brand.....HONDA
 TypeGX390
 Pistons no. and displacement.....
 single-cylinder 389 cm³
 Max gross power
 11,7HP - 8,7 kW @ 3600 rpm (GX390)
 Electrical start..... 12 volt

DIESEL ENGINE

Brand..... HATZ
 Type 1B40 - HD Autorev
 Pistons no. and displacement.....
 single-cylinder 462 cm³
 Max gross power
 10 HP - 7,5 kW @ 3600 rpm
 Electrical start..... 12 volt

LITHIUM-ION SYSTEM

Lithium-ion powered 4,8 kWh
 Onboard battery charger.....
 220V 50Hz or 110V 50Hz
 Autonomy..... 4-5 h
 Recharge time on flat batteries
4 h (indicative)
 Recharge time to 80% on flat batteries.
 2 h (indicative)

HYDRAULIC PUMPS

Electric motor no. 2 gear pumps

TRACKED UNDERCARRIAGE

Track tensioner grease-filled
 Rollers no. per side 3 + slide

Translation speed with 3rd auto2speed:

- petrol engine 0,6 - 1,4 - 2,7 km/h
 - diesel engine 0,7 - 1,8 - 3,6 km/h
 - lithium system..... 0,4 - 0,8 - 1,6 km/h

WEIGHT MACHINE petrol / diesel engine 2230 kg

WEIGHT MACHINE lithium system 2300 kg

MAX WIND SPEED 12,5 m/s